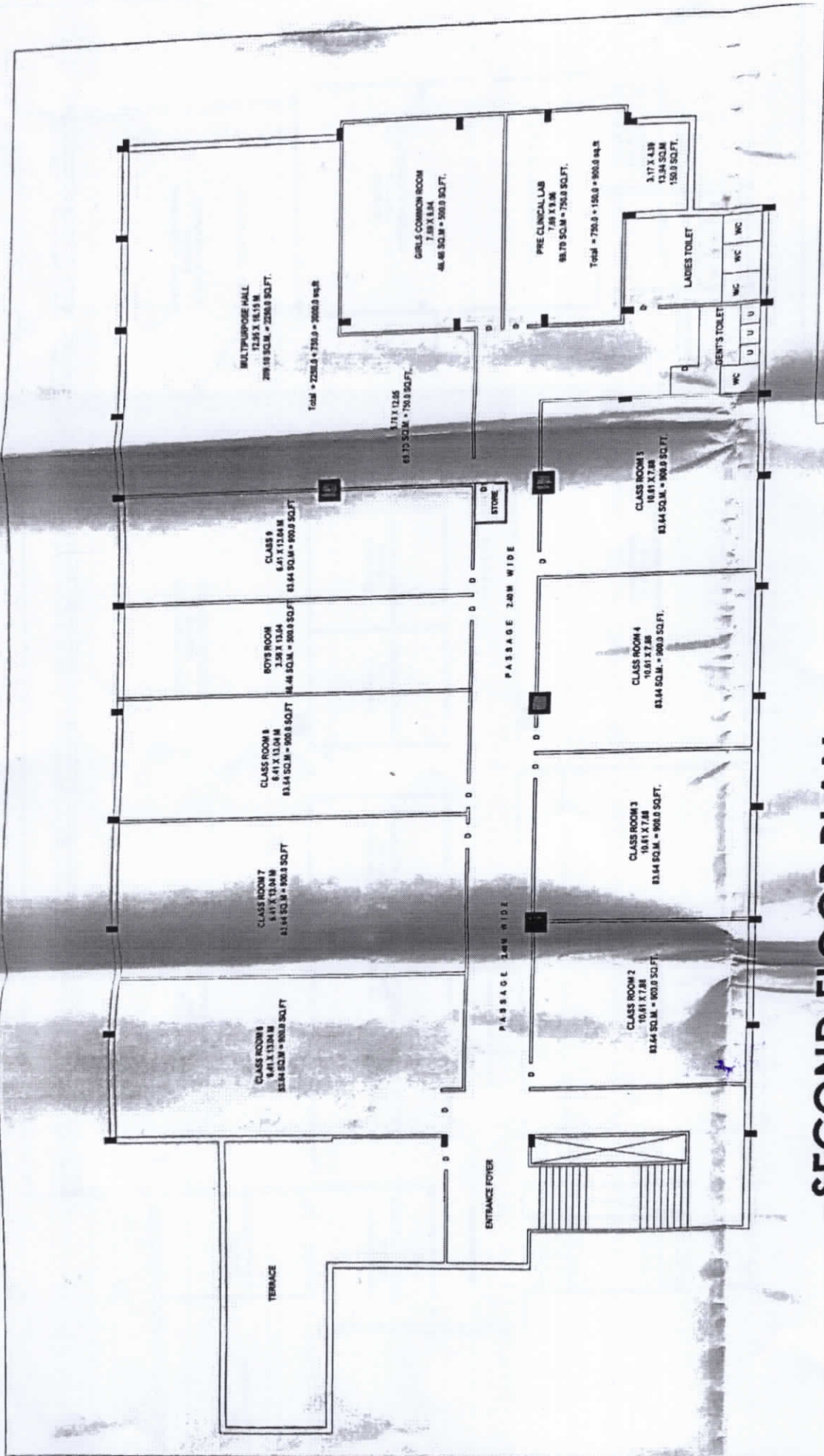


JAWAHAR MEDICAL FOUNDATION'S
A.C.P.M. COLLEGE OF NURSING,
DHULE



BLUE PRINT OF COLLEGE BUILDING





SECOND FLOOR PLAN

**EXISTING BUILDING PLAN OF JMF'S A.C.P.M. COLLEGE /
SCHOOL OF NURSING ON G. NO. 14/1, 14/2 & 14/3
AT MORANE, DHULE (M.S.)**

Surya
Er. Sachin R. Wani
 B.E. Civil, A.M.I.E., A.I.V.,
 Chartered Engineer
 Govt. Approved Valuer
 1st Floor, Bhansali Plaza,
 Nagarpatti, Dhule-424001
 M.No 9422790632
 Email-srwanit0@rediffmail.com

dr
PRINCIPAL,
JMF'S, A.C.P.M. COLLEGE
OF NURSING, DHULE.