

JAWAHAR MEDICAL FOUNDATION'S

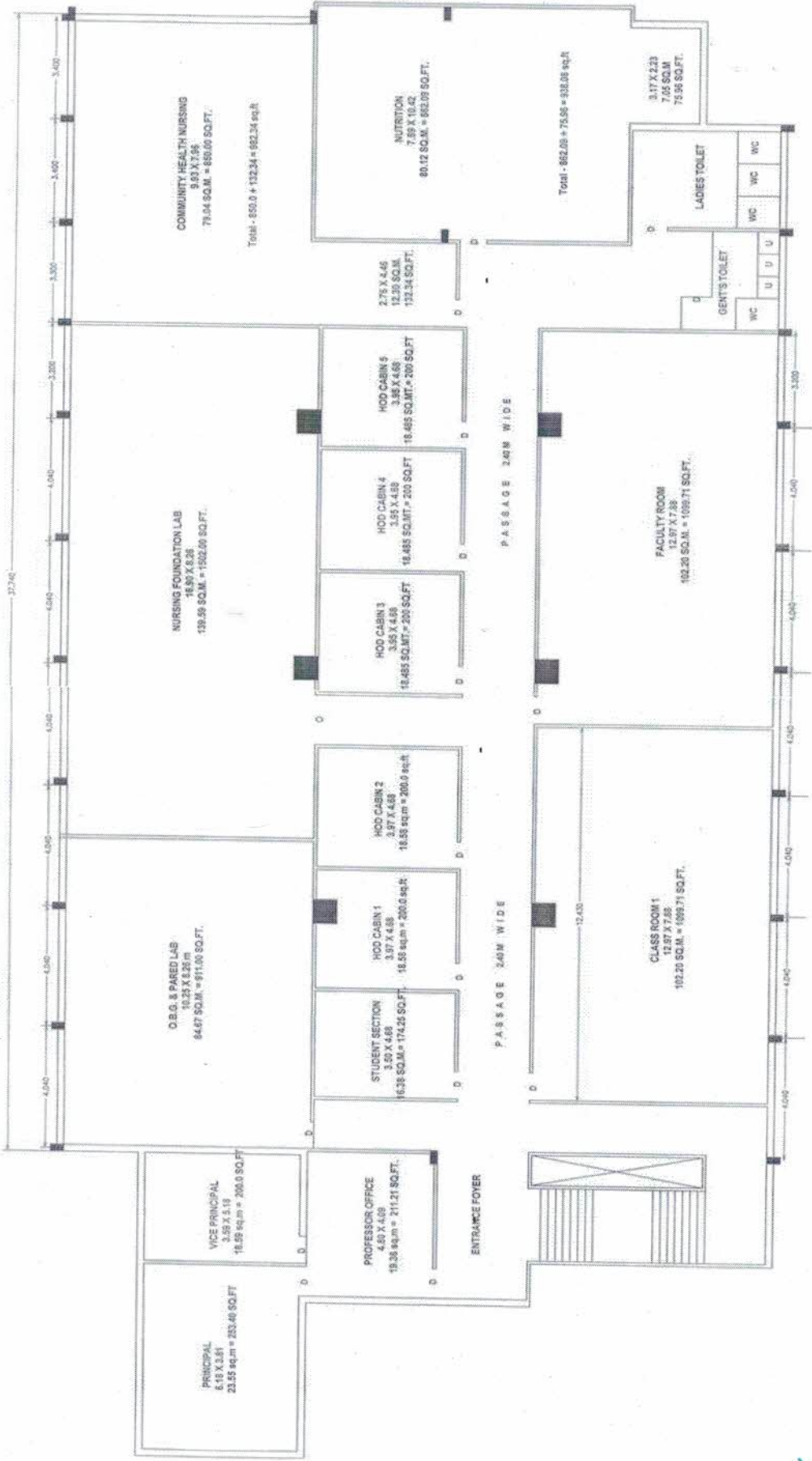
A.C.P.M.College of Nursing,Dhule



BLUE PRINT OF COLLEGE BUILDING




Principal
A.C.P.M. College of Nursing,
Dhule.

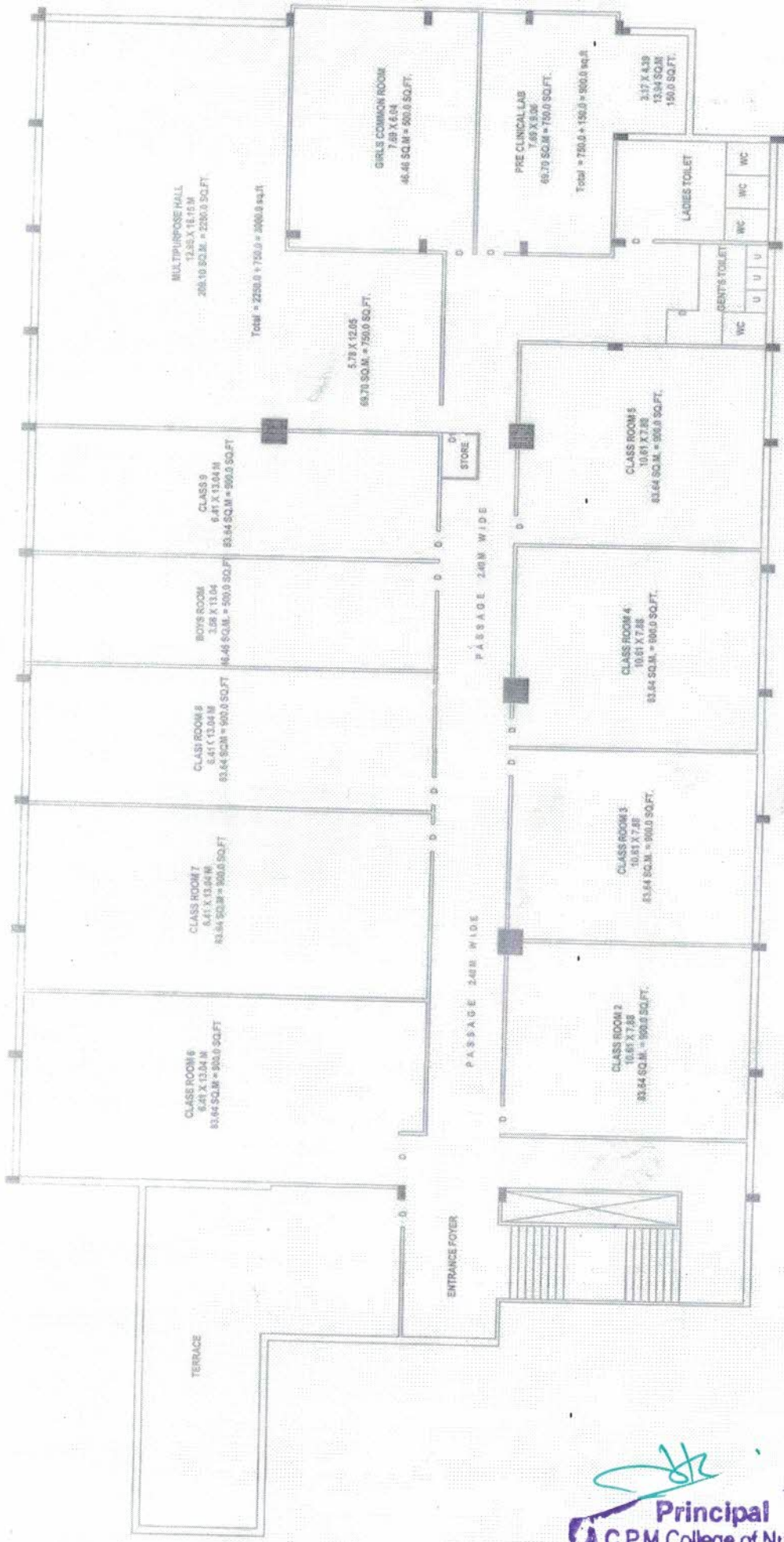


FIRST FLOOR PLAN

**EXISTING BUILDING PLAN OF JMF'S A.C.P.M. COLLEGE /
SCHOOL OF NURSING ON G. NO. 14/1, 14/2 & 14/3
AT MORANE, DHULE (M.S.)**

Signature
Er. Sachin K. Wani
 B.E. Civil, A.M.I.E., A.I.V.,
 Chartered Engineer
 Govt. Approved Valuer
 1st Floor, Bhamburda Plaza,
 Nandgaon, Dhule-424001
 Mob. No. 9422750832
 Email: sckwani10@gmail.com

Signature
Principal
 A.C.P.M. College of Nursing,
 Dhule.



SECOND FLOOR PLAN

**EXISTING BUILDING PLAN OF JMF'S A.C.P.M. COLLEGE /
SCHOOL OF NURSING ON G. NO. 14/1, 14/2 & 14/3
AT MORANE, DHULE (M.S.)**

Srini
Er. Sachin R. Wani
 B.E. Civil, A.M.I.E., A.I.V.,
 Chartered Engineer
 Govt. Approved Valuer
 1st Floor, Bhansali Plaza,
 Nagarpatti, Dhule-424001
 M.No 9422790632
 Email-srwani10@rediffmail.com

SK
Principal
A.C.P.M. College of Nursing,
 Dhule.