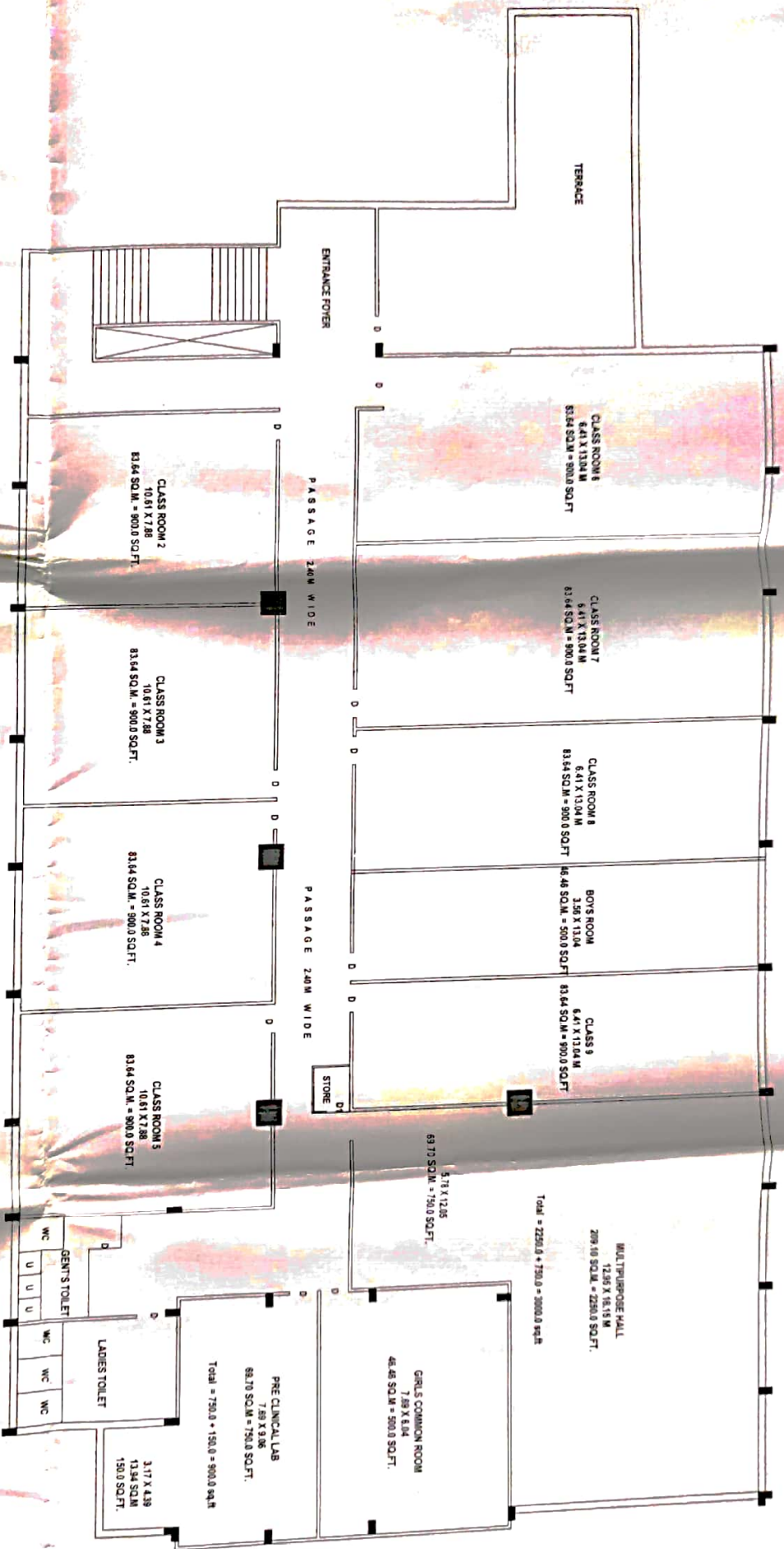


FIRST FLOOR PLAN

**EXISTING BUILDING PLAN OF JMF'S A.C.P.M. COLLEGE /
SCHOOL OF NURSING ON G. NO. 14/1, 14/2 & 14/3
AT MORANE, DHULE (M.S.)**

Sachin R. Wani
Er. Sachin R. Wani
 B.E. Civil, A.M.I.E., A.I.V.,
 Chartered Engineer
 Govt. Approved Valuer
 1st Floor, Bhansali Plaza,
 Naganpatti, Dhule-424001
 M.No 9422790632
 Email: srwani10@rediffmail.com



SECOND FLOOR PLAN

**EXISTING BUILDING PLAN OF JMF'S A.C.P.M. COLLEGE /
SCHOOL OF NURSING ON G. NO. 14/1, 14/2 & 14/3
AT MORANE, DHULE (M.S.)**

Sachin R. Wani
Er. Sachin R. Wani
 B.E. CIVIL, A.M.I.E., A.I.V.,
 Chartered Engineer
 Govt. Approved Valuer
 1st Floor, Bhansali Plaza,
 Nagarpathi, Dhule-424001
 M.No. 94222790632
 Email: srwani10@rediffmail.com